



WELCOME TO QUALITY



GROWSCIENCES

PRODUCT EDUCATION BOOK

QUALITY IS NOT AN ACT, it is a habit.
QUALITY IS NEVER an accident;
IT IS ALWAYS THE RESULT of high intention,
SINCERE EFFORT, intelligent direction
AND SKILLFUL execution;
IT REPRESENTS the wise choice
OF MANY alternatives.

WELCOME TO QUALITY

About Us

Headquartered in Phoenix, AZ, Grow Sciences is focused on cultivating elite genetics in a craft cannabis format to produce top quality cannabis products.

Our current operations encompass 80,000 square feet dedicated to indoor cultivation, solventless and BHO extraction, and kitchen.

All products are 100% lab tested, free of mold and mildew, with no harmful pesticides or chemicals used during cultivation or extraction.





ADVISORY

EXPLICIT TERPS

"If you want to make an apple pie from scratch, you must first create the universe."

- Carl Sagan

CORE VALUES	03
CANNABIS PLANT BREAKDOWN	06
ENTOURAGE EFFECT	07
BROADSPECTRUM BELIEFS	09
LAB TESTING	12
TERPENE CHART	13
TOP SHELF FLOWER & JOINTS	15
LIVE HASH ROSIN EXTRACTS	17
LIVE RESIN EXTRACTS	27
CARTRIDGES	37
EDIBLES	41

Would You Buy That 8th?

This is our mantra and it represents the complete care our team instills in every flower, extract, cartridge and edible product we make. It begins with the cultivation of every plant and carries through to the final product, satisfying our personal standards of quality, so that we know it will satisfy yours.





Every Plant, Every Day.

Our goal for quality requires our team tending to every plant, every day, no exceptions.

Our strain selection is constantly expanding in search for new flavors that will become the next generation of flower and extracts. We do this by sourcing top shelf genetics from best in class breeders, as well as pheno hunting for our own.

All plants are grown to full term, which varies by strain and product type, and then properly harvested according to the requirements for flower or extracts. For example, our dedicated flower strains will dry and cure, while our dedicated extracts strains will go straight to the freezer in preparation for extraction.

MADE 100% IN HOUSE.

**OUR FLOWER.
OUR EXTRACTS.
OUR TEAM.**



CALYX & BRACT

The Bract houses the female's reproductive organs. Appearing as green tear-shaped "leaves," and heavily covered in resin glands, they produce the highest concentration of cannabinoids out of all other plant parts.

The Calyx is a translucent layer covering the ovule at the flower's base. They are hidden away inside the bract and cannot be seen by the naked eye.

Our flower is covered in a thick layer of trichomes, making it hard to distinguish single bracts.

STEM

The Stem, aka the stalk, is what supports the weight of the colas, keeps the plant upright, and contains the vascular system.

This system uses *xylem cells* to carry nutrients, starches, sugars, moisture, and information up from the roots to the leaves and *phloem cells* to carry food downward from the leaves to the roots.

COLA

The Cola is a group of buds that grow closely together in clusters. Smaller colas are found up and down the branches. The main cola, or apical bud, almost always forms on the very top of the plant.

SUGAR LEAVES

Sugar Leaves are the small leaves found all throughout the colas. They are typically coated in trichomes giving them a "sugar coated" effect.

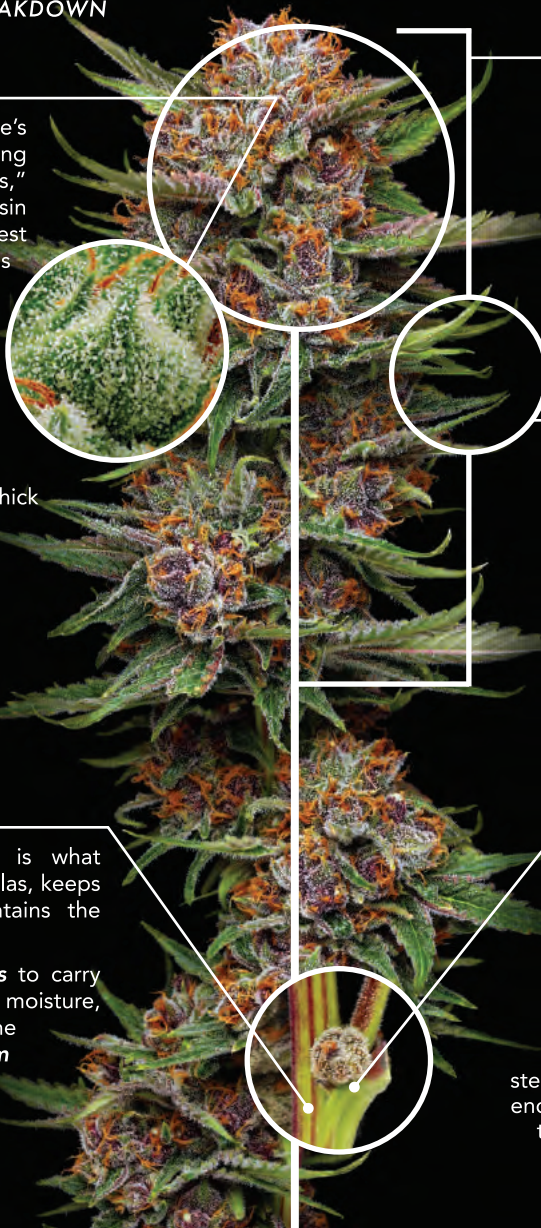
Sugar leaves are often saved as "trim" and can be used to make edibles and extracts.

NODE

Nodes refer to where the plant forks into separate branches. This happens off the main stem, as well as along the branches.

The space between each node is called "internodal spacing."

Cultivators will often cut a stem back a few nodes to encourage lateral growth and help the plant create more bud sites.



TRICHOMES

The word trichome is derived from the Greek word "*Tríchōma*," which translates to "growth of hair."

There are three different types of trichomes: Bulbous, Capitate Sessile, and Capitate Stalked which are the largest at 50-100µm wide.

These resinous mushroom shaped glands ooze smelly, oily, goodness filled with terpenes, flavinoids, and cannabinoids.



PISTILS & STIGMAS

Pistils house the flower's reproductive organs.

Stigmas are part of the pistils and serve to collect pollen from male plants. Stigmas start their life with a pale, white coloration before they progressively darken through shades of yellow, orange, red, or brown as the plant matures.

They both play an integral role in the plant's reproduction, but have little effect on the flower's potency, aromas, and taste.



Entourage Effect

A terpene and cannabinoid walk into a trichome...

The Entourage Effect is a combination of effects from ALL of the plant's naturally occurring chemical compounds, most notably, Cannabinoids and Terpenes (not just THC!). They act synergistically to produce a more robust experience than if you consumed them separately in isolated form.



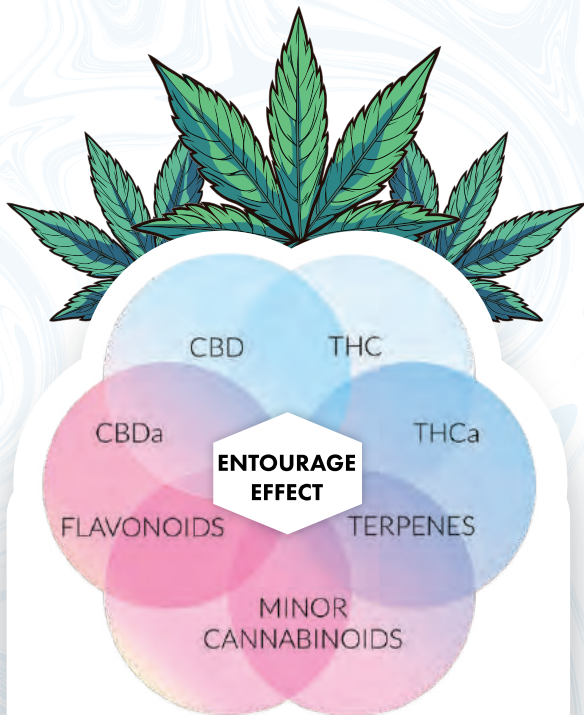
ASK US ABOUT OUR TERPS



**IN ALL SERIOUSNESS, WE STOPPED SHOPPING
FOR THC IN 2017. LET US SHARE WHY.**

To only shop for high THC cannabis fails to acknowledge the full spectrum of what actually contributes to how you feel.

We consistently offer a full line of Broad Spectrum products, ranging as low as 15% to as high as 30%+, knowing the most benefit comes from the whole plant.



While many Cannabinoids and terpenes share similar qualities, each one comes with their own unique effects and benefits. All of the chemical compounds found naturally in cannabis work synergistically by modulating or enhancing the effects of each other with our endocannabinoid system and receptors. The presence and ratio of each, alongside all other naturally occurring chemicals, will change their overall behavior and the type of high one feels.

Broad Spectrum Beliefs

Results May Vary

Terpenes and cannabinoids work with everyone's endocannabinoid system differently, creating a unique experience for each individual.

How does the Entourage Effect work?

Our bodies have an endocannabinoid system that plays an integral part of the human nervous system. It is believed to play an important role in regulating physiological and cognitive processes, such as pain-sensation, appetite, mood, memory, and mediating the effects of cannabis.

Cannabinoids, terpenes, and other naturally occurring compounds found in cannabis interact with the receptors throughout our brain and body and our endocannabinoid system. The most notable receptors being the CB1 and CB2 receptors.

These receptors can be directly effected by THC, CBD, terpenes, and the various other natural chemicals found in cannabis. They can also be indirectly interacted with based on the presence and ratio of the previously mentioned chemical compounds.

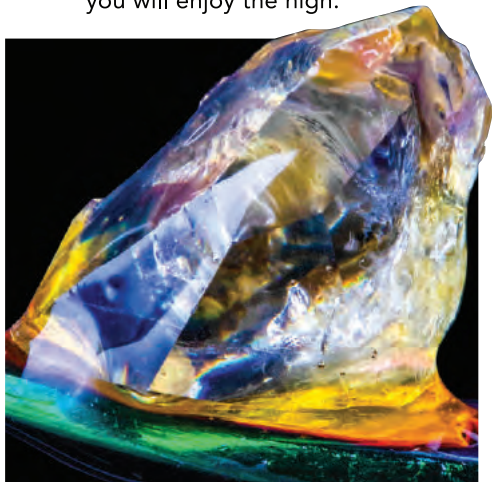
TERPENES

Terpenes are the aromatic oil compounds that give cannabis strains their own unique aromas and flavors. They are found across the plant kingdom and are employed by plants to attract pollinators and ward off predators.

Secreted from the cannabis plant's glands (aka trichomes), terpenes contribute to the entourage effect by helping cannabinoids cross the blood brain barrier and bind to receptors that THC and other cannabinoids cannot, resulting in a well rounded experience and high.

While many terpenes share similar qualities, everyone's endocannabinoid system reacts differently.

The nose, knows - if you like the smell of the strain, there's a good chance you will enjoy the high.



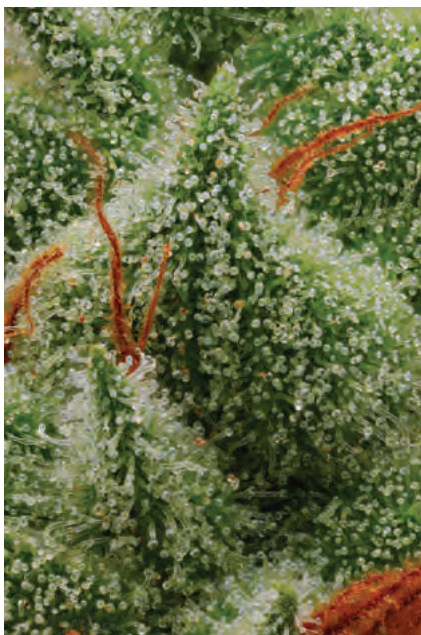
FLAVONOIDS



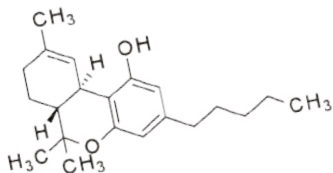
Flavonoids, much like terpenes, contribute to how we perceive cannabis through our senses. They work with terpenes to bring us the wide array of flavors that hit our taste buds when smoking. They are thought to add to the synergistic qualities of their more well known and studied counterparts by modulating the effects of cannabinoids and terpenes with the blood brain barrier and receptors.

It is still unknown whether they play an integral role in the modification or enhancement of the effects cannabis.

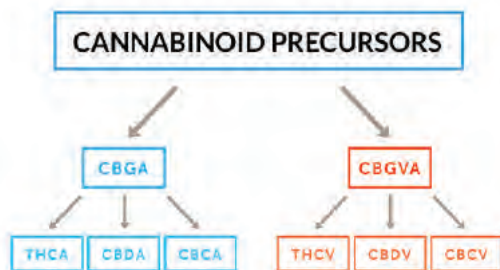
CANNABINOIDS



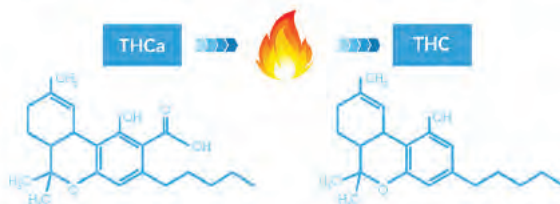
Cannabinoids are naturally occurring chemical compounds found in cannabis and are secreted from the same trichome glands as terpenes. There are over 600 chemical compounds found in cannabis. Over 100 of them are cannabinoid compounds with varying effects and potential benefits. THCa, THC and CBD are the most well known and studied.



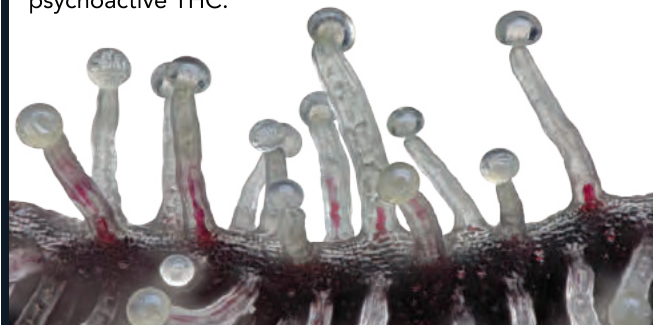
Cannabinoid Facts



The same cannabinoid acids responsible for synthesizing into THC and CBD are also the building blocks to many other beneficial cannabinoids like CBG, CBC, and THCV.



THC is not directly produced by the cannabis plant, but is “activated” with heat. This heating process is known as decarboxylation and is achieved when you light your bowl, bake or heat up your weed. This activates non-psychoactive THCa into psychoactive THC.



Test Results

a.k.a What to look at besides THC %!

All Arizona cannabis manufacturers must submit every product to a state-licensed laboratory for mandatory safety and compliance tests before selling to dispensaries. Labs in Arizona test for specific terpenes and cannabinoids, with varying processes and machinery. Access test results online via a QR code on each product, providing information on potency, cannabinoid content, and terpene percentages.

These results serve as a general representation, not the absolute amount in each product. Cannabis testing measures terpene profiles, cannabinoid content, and checks for harmful additives, with companies routinely testing a small portion of each batch before hitting shelves.



Scan to view
the test results
of our products.

TERMS TO KNOW:

LOQ - Limit of Quantitation
(The lowest the machine can test)
CFU - Colony Forming Units

NT - Not Tested
PPM - Parts Per Million
ND - Not Detected

Terpenes



Lemon



Cinnamon



Lavender

Terpene Profile

The symbols at the top of the chart represent key aromas and flavors to expect based on the detected terps.

This breakdown can provide insight on how each strain might smell, taste, & affect you.

Terpene	%	mg/g
β-Limonene	0.56%	5.64 mg/g
β-Caryophyllene	0.43%	4.31 mg/g
Linalool	0.34%	3.39 mg/g
α-Humulene	0.19%	1.94 mg/g
α-Terpineol	0.10%	0.97 mg/g

Terpenes are listed from highest to lowest/ND with their numerical values to the right. These values represent the quantity of each terpene that has been detected in the small testing sample.

Safety

Pass

Safety Check

All Cannabis products in the state of Arizona require a passing test result for harmful compounds before they can be released to the market.

Test	Status
Heavy Metals	Pass
Microbials	Pass
Pesticides	Pass
Moisture	Completed
Alkaloids	Not Tested

Cannabinoids

28.66%	0.00%	10.50%
Total THC	Total CBD	Moisture

Total Cannabinoids

The THC percentage listed in the top left corner is activated THC. Other notable cannabinoids can be found listed below. Not all cannabinoids are tested for during the process.

Cannabinoids	Mass (%)	Mass (mg/g)
THCa	31.10%	310.96 mg/g
Δ9-THC	1.39%	13.90 mg/g
Δ8-THC	ND	ND
THCV	ND	ND
CBDa	ND	ND

TERPENES TO KNOW!

EARTHY

Warm • Herbal
Musky • Cloves • Grassy

Carene

Full Body
Relaxation

Rosemary
Basil
Bell Peppers
Cedar

Muscle Relaxant
Anti-Inflammatory
Memory Retention
Arthritis Relief

Ocimene

Uplifting
Invigorating

Orchids
Juniper
Pepper
Kumquats

Anti-Inflammatory
Anti-fungal
Anti-Viral

Terpinolene

Stress
Relief

Juniper
Nutmeg
Lilacs
Apples

Antibacterial
Anti-fungal
Antioxidant
Insect Repellent

Phytol

Pain Relief
Uplifting

Matcha
Green Tea
Sencha
Chlorophyll

Antioxidant
Anti-Inflammatory
Anti-Tumor
Pain & Anxiety Relief

Fenchol

Uplifting
Invigorating

Basil
Aster Flowers

Antibacterial
Anti-Microbial
Antioxidant
Analgesic

FLORAL

Sweet • Lavender
Lilac • Nutty • Candy

Linalool

Sleepy
Calming

Lavender
Cinnamon
Coriander
Mint

Anti-Epileptic
Pain & Stress Relief
Sedative & Sleep Aid
Anti-Inflammatory

Bisabolol

Relaxing
Uplifting

Chamomile
Candeia Trees

Anti-Inflammatory
Antioxidant
Analgesic
Stress Relief

Terpineol

Euphoric
Calming

Lilac
Pine
Cloves

Antibacterial
Sedative

Nerolidol

Calming
Uplifting

Jasmine
Tea Tree

Anti-Anxiety
Pain & Stress Relief
Neuroprotectante
Anti-Microbial

Geraniol

Happy
Uplifting

Geranium
Lemongrass
Citronella
Peaches

Anti-Inflammatory
Antibacterial
Antioxidant

SPICY

Black Pepper • Sharp
Warm • Bright • Savory

Caryophyllene

Calm
Relaxing

Black
Pepper
Peppers

Muscle Relaxant
Stress & Pain
Relief
Sleep Aid

Terpinene

Calming
Sleepy

Black Pepper
Hops
Oregano

Antiseptic
Antibacterial
Antioxidant
Anti-Inflammatory

Sabinene

Relaxing
Full Body High

Black Pepper
Forest Trees
Cloves
Nutmeg

Antibacterial
Anti-Microbial
Antioxidant
Gastric Protectant

Bergamotene

Relaxing
Uplifting

Cotton Seeds
Carrots
Limes

Antibacterial
Anti-inflammatory
Antioxidant
Anti-tumor

Isobornbornel

Sleepy
Calming

Cumin
Anise
Thyme

Antibacterial
Anti-Fungal
Antiviral

FLAVOR HUNTERS UNITE!

CITRUS

Bright • Citrus Fruits
Sweet • Grassy

Limonene Energized Euphoric

Lemons &
Other Fruits
Fennel
Juniper

Nausea, Pain
& Stress Relief
Anti-Depressant
Gastric Protectant

Valencene Uplifting Focused

Oranges
Nectarines
Tangerines
Mangos

Anti-Inflammatory
Bronchodilator
Promotes Cognitive
Function/Alertness

Geranyl Relaxing Uplifting

Rosemary
Basil
Bell Peppers
Cedar

Antibacterial
Anti-Fungal
Antioxidant
Antimicrobial

Farnesene Invigorating Uplifting

Apples
Citrus Fruit
Ginger
Hops

Anti-Anxiety
Muscle Tension
& Stress Relief
Neuroprotectant

Cymene Euphoric Full Body High

Cumin
Anise
Thyme

Nausea, Pain
& Anxiety Relief
Promotes Cognitive
Function &

MINTY

Fresh • Cooling
Smooth • Sharp • Sweet

Eucalyptol Invigorating Uplifting

Eucalyptus
Sage
Bay Leaves
Tea Tree

Bronchodilator
Pain & Stress Relief
Anti Inflammatory
Alzheimer Treatment

Camphene Relaxing Euphoric

Mint
Orchids
Cypress Oil

Anti-Inflammatory
Bronchodilator
Pain Relief
Analgesic

Menthol Focused Invigorating

Peppermint
Spearmint

Analgesic
Bronchodilator
Nausea, Pain
& Anxiety Relief

Borneol Euphoric Relaxing

Camphor
Ginger
Rosemary
Thyme

Anti-Inflammatory
Analgesic
Bronchodilator
Neuroprotectant

Pulegone Uplifting Invigorating

Mint
Cat Nip
Peppermint

Anti-Epileptic
Anti-Anxiety
Bronchodilator
Antiviral

WOODSY

Hoppy • Smooth
Piney • Fresh • Herbal

Pinene Relaxing Euphoric

Pine Needles
Dill
Basil
Rosemary

Stress & Nausea Relief
Alertness
Anti-Inflammatory
Memory Retention

Humulene Calming Uplifting

Hops
Coriander
Cloves

Anti-Inflammatory
Antibacterial
Pain Relief

Myrcene Sleepy Full Body High

Hops
Citrus Fruits

Anti-Fungal
Muscle Relaxant
Sedative
Sleep Aid

Guaiol Calming Euphoric

Cypress Pines
Guaicum
Tea Tree

Anti-Anxiety
Muscle Tension
& Stress Relief

Phellandrene Euphoric Focused

Ginger
Mint
Parsley
Lavender

Antibacterial
Anti-Depressant
Antioxidant
Anti-tumor

TOP SHELF FLOWER

All of our nugs are harvested and hand trimmed by our team of talented, dedicated and passionate cannabis savages.

From the very beginning of our process, we strive to provide the most optimal growing conditions for our plants. We give them everything they need to create the building blocks to provide the fullest and cleanest experience possible.

Pheno hunted and grown to full term, we seek out a variety of strains with unique and exciting terpene and cannabinoid profiles. Our rotating line up highlights the best of what nature has to offer.

Our flower is a testament to our standards of quality and serves as the genesis to our Infused Pre-Rolls, Extracts, Cartridges and Rosin Edibles.



ELITE GENETICS



GROWN TO
FULL TERM



WHOLE PLANT
HARVEST & DRY



HAND TRIMMED
FLOWER



METICULOUS
CURE



PREMIUM
PACKAGING



Eighths ✦ Half Ounce

Top nug, top quality. A big bag of magic!

Our Flower products showcase every bit of dedication that goes into cultivating quality from start to finish.

Selected by hand, these trophy nug highlight each strain's signature aroma, structure, and flavor. Harvested with care at the peak of maturity, each bud is hand trimmed, and selected by our team to ensure the end product not only meets our quality standards, but exceeds yours.



Infused Joints

Top Shelf Cannabis +THCA Diamonds

Our Joints are mixed, not coated, allowing for a more even burn and enjoyable experience.

- ✦ 5 Infused Half Gram Pre-Rolls
- ✦ Full Nug Flower
- ✦ Broad Spectrum THCA Diamonds
- ✦ Organic Hemp Papers



SOLVENTLESS EXTRACTS

Our solventless extracts are a pure, all-natural extract of our craft cannabis flowers.



We use only ice, water, heat and pressure to create our full line of Live Hash Rosin extracts.

This means **no chemicals**, **no cutting agents**, **no thickening agents**, **no distillate**, and no other outside ingredients are used in our production process.



FLOWER



WATER



HEAT



PRESSURE

What is **Solventless Extraction**

Solventless Extraction is the process of separating the trichomes from fresh frozen or dried cannabis plant material using no combustible solvents or harsh chemicals. We only use water, ice, heat and pressure to produce clean, tasty, and broad spectrum extracts of the highest quality.



Hand crafted with care, in freezing cold temperatures, by wizards.

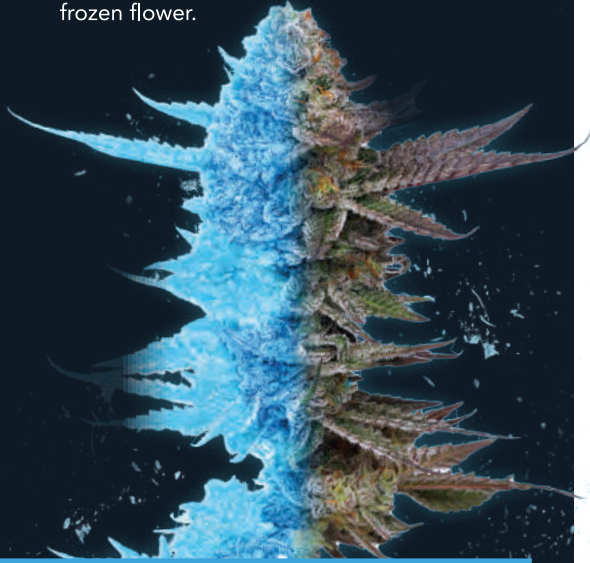
Starting Material

Live Hash Rosin & Live Resin

Our Live Hash Rosin & Live Resin is made from fresh-frozen flower instead of cured flower. We harvest the buds directly off the plant by hand and flash freeze them in large bags. Once frozen, the flower is ready to process.

Flash Freezing the plants directly after harvest retains the fragile terpenes found in the plant, resulting in a tastier end product.

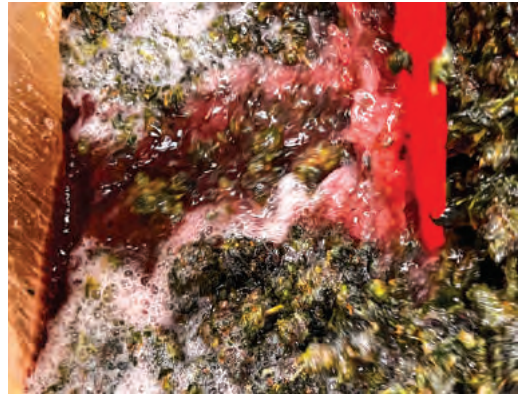
In our pursuit of creating the highest quality products, all of our extracts start with fresh frozen flower.



Cured Resin & Hash Rosin

Unlike our **Live** extract lines, some extracts are made from dried flower, resulting in a less flavorful and darker than normal consistency. Starting material varies between trim, smaller lower buds (larf), and large full buds.

The Process Ice Water Extraction



WASHING

Ice Water Extraction in cannabis, aka washing, is the process of glandular separation with the use of reverse osmosis water, ice, and agitation.

After the material has been agitated, it will go through a filtration process, leaving behind only the resin glands for collection and drying. The wet hash that is left for collection resembles pudding and is poured into shallow trays for freeze drying.

We use a few different kinds of food grade sieving and washing bags for production from several different suppliers dependent upon the consistency of rosin being created. (Cold Cure, Badder, etc.)

FREEZE DRYING



The Freeze Dryer removes moisture by deep freezing the wet hash, initiating a vacuum and going through a process called "sublimation" where the solid ice transitions directly to a gas, allowing total removal of moisture.

Once this process is complete, we remove the trays to reveal a dry hash. The dry hash has a kinetic sand like texture and appearance.

Proper completion of this process is integral. If the hash isn't dried adequately, we are unable to create rosin with it.

SQUISHING & PRESSING



After All of the Moisture has been removed, the dry hash is loaded into special rosin bags and pressed on our PurePressure machine. The machine uses heated plates and several tons of pressure to squish the bags and separate the cannabinoids and terpenes from the dry hash. The result is a waterfall of golden resinous sap that will be processed further, depending on the end consistency we are trying to achieve.

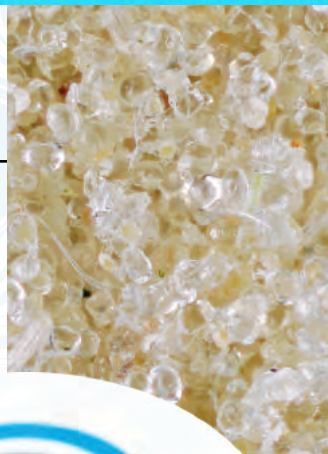
We cover these consistencies further in the next pages.

Full Melt Hash

Consider this our Holy Grail. You'll be on a quest for more.

Our Full Melt Hash is a concentration of trichome heads that have gone through a sifting process. The whole process is done under cold temperatures to keep the concentrate from oxidizing and losing its texture and terpene profile.

Our Full Melt Hash has a sand-like consistency that ranges from shades of off-white to pale yellow. Only certain strains with large bulbous trichome heads can be made into Full Melt. This is one of our most sought after extracts.



Ideal Dab Temp:

320°F - 450°F

Cold start recommended.

**THIS PRODUCT MUST BE KEPT
COLD & UPRIGHT AT ALL TIMES!**

If left at room temperature it will oxidize
& budder up very quickly.

Storing this product in the **refrigerator** will preserve its sandy consistency and the terpenes' aromatic effects.

Storing this product at **room temp** will cause oxidation and will in turn "grease up," changing its aroma, texture, and flavor profile. It does not lose potency during this oxidation process.

PRO TIP: We suggest enjoying this product on quartz or glass. For beginners or portable dab rig users we suggest "Flagging" this extract. **Flagging** is the process of placing an extract between two layers of parchment paper and squishing it between your fingers. This will create friction and a small amount of heat making it more pliable & easier to work with.



Fresh Press

Freshly squeezed, making oranges everywhere jealous.

Our Fresh Press is the first consistency right after we press the dehydrated ice water hash. The ice water hash is packed into small mesh screen bags and put into a heated mechanical press machine. The bags are squeezed until the resin seeps through the screens, creating a waterfall of light golden sappy oil, that when cooled, forms a shatter-like consistency: our Fresh Press Rosin.

This resinous sap serves as the starting material to our other extracts, and also happens to be our lab wizards' favorite consistency.



Ideal Dab Temp:

400°F - 550°F

Cold start recommended.

THIS PRODUCT MUST BE KEPT COLD & UPRIGHT AT ALL TIMES!

After storing at cold temps, let this product rest before dabbing. Sauces can sizzle when dabbed due to condensation.

Storing this product in the **refrigerator** will preserve its current glassy consistency and the terpenes' aromatic effects and flavor.

Storing this product at **room temp** will cause oxidation and will in turn "budder up," changing its aroma, texture, and flavor profile. It does not lose potency during this oxidation process.

PRO TIP:

If this product does budder up, don't freak out; enjoy the increased aromatic effects as is or use a small tool (dabbers are great!) to mix or "whip" it to create your own "Cold Cure."



Cold Cure

Cool as ice. As in "I'm so icy, I'll make ya say Brr." -Gucci Mane

For our Cold Cure Rosin we start with Fresh Press that is placed into a mason jar and left to sit at room temperature. Once it budders up and the terpenes have separated, a thick terpene layer sits on top of the rosin. Our lab techs then whip it to achieve a smooth and creamy consistency.

While the overall color and texture will vary depending on the terpene and cannabinoid content, Cold Cure is known to range in color from pale white to shades of deep yellow or orange, with the consistency of a jam-like sauce to a wet dollop, or Play-Dough-like chunk.



Ideal Dab Temp:
400°F - 550°F
Cold start recommended.

THIS PRODUCT MUST BE KEPT COLD & UPRIGHT AT ALL TIMES!

After storing at cold temps, let this product rest before dabbing. Sauces can sizzle when dabbed due to condensation.

We typically suggest storing this product **in the refrigerator**. The terpene and cannabinoid content vary from strain to strain and can alter the color, consistency, and storage requirements.

PRO TIP:

If this product does dry out, you can finger press it, similar to how you would flag Full Melt, by squishing it between two layers of parchment paper with your fingers until molded together.



Badder

No cookies were harmed in the creation of this product.

We take our Fresh Press and whip it, this time with a low heat, into a smooth and creamy consistency. The texture of this extract varies from strain to strain depending on the cannabinoid and terpene profile. The consistency can range from a sauce to a soft or slightly grainy, wet dollop. The color can range from light-yellow to shades of deep yellow with orange undertones.



Ideal Dab Temp:
400°F - 550°F
Cold start recommended.

THIS PRODUCT MUST BE KEPT UPRIGHT AT ALL TIMES!

After storing at cold temps, let this product rest before dabbing. Sauces can sizzle when dabbed due to condensation.

We typically suggest storing this product **in the refrigerator**. The terpene and cannabinoid content vary from strain to strain and can alter the color, consistency, and storage requirements.

PRO TIP:

This consistency is perfect for traveling or when cold and room temperature storage is not an option.



Slushie

Not found at your local 711.

To make our Slushie we take our Fresh Press, place it into micron screen bags, and press it again. Instead of pressing as much oil out at once, we'll increase the temp and press it for hours, further purifying the rosin, and in time, squeezing out THCa that hardens into crystal-like structures almost immediately.

We then mix the chunky THCa crystals into our solventless terp sauce to create lumpy, honey-like mixture that is typically a rich yellow gold in color. The THCa chunks are responsible for the psychoactive effects, while the terpene sauce is where the flavor and aroma originate.



Ideal Dab Temp:

400°F - 550°F

Cold start recommended.

THIS PRODUCT MUST BE KEPT COLD & UPRIGHT AT ALL TIMES!

After storing at cold temps, let this product rest before dabbing. Sauces can sizzle when dabbed due to condensation.

Storing this product in the **refrigerator** will preserve the terpenes' aromatic effects and flavor.

When storing **at room temperature**, the terpenes will start to break down the THCa, turning the larger "diamonds" into smaller chunks and will start to resemble jam.

PRO TIP:

To experience the full flavors of this terpene sauce, try a cold start or a low temp dab (325°F - 400°F).



Jam

We've jammed a ton of terps into this tiny jar.

Jam is micro-crystals of slightly activated THC mixed into a terpene rich fraction sauce! We bake up these Jams through a "cooking process" where we take our Fresh Press Rosin, place it in a mason jar, then throw it into a specialty conventional oven for a two-step cooking process. This process will induce a "crash" - the separation of terpenes from THC.

Depending on the cannabinoid and terpene profile of the strain, this will take anywhere from 1-30 days. We then pulverize the THCa chunks into micro-crystals and emulsify them back into the terpene rich sauce. The end result is a sparkling golden yellow sauce that can appear translucent to slightly opaque, with a consistency of thick syrup to grainy honey.



Ideal Dab Temp:

400°F - 550°F

Cold start recommended.

THIS PRODUCT MUST BE UPRIGHT AT ALL TIMES!

After storing at cold temps, let this product rest before dabbing. Sauces can sizzle when dabbed due to condensation.

Cold Storage is optional but suggested to help preserve the terpenes' aromatic effects & flavor.

This product is extremely saucy and needs to remain upright at all times. Even a few minutes on its side will shift the product to the lid.

PRO TIP:

Choosing a chunkier dab with less sauce will result in a heavier high while choosing a dab with more sauce and less chunks will be more flavorful. This consistency is great for individuals who are looking to control their flavor-to-high ratio or who are new to dabbing.



FULL SPECTRUM LIVE RESIN



Our live resin extracts are clean, quality products made from our fresh frozen flower to preserve terpenes and toxicological effects.

We start with top shelf flower strains grown specifically for Live Resin extraction, and state of the art equipment in our extraction process. The outcome is a very aromatic and potent extract, which smells and tastes exactly like the strain would on harvest day.



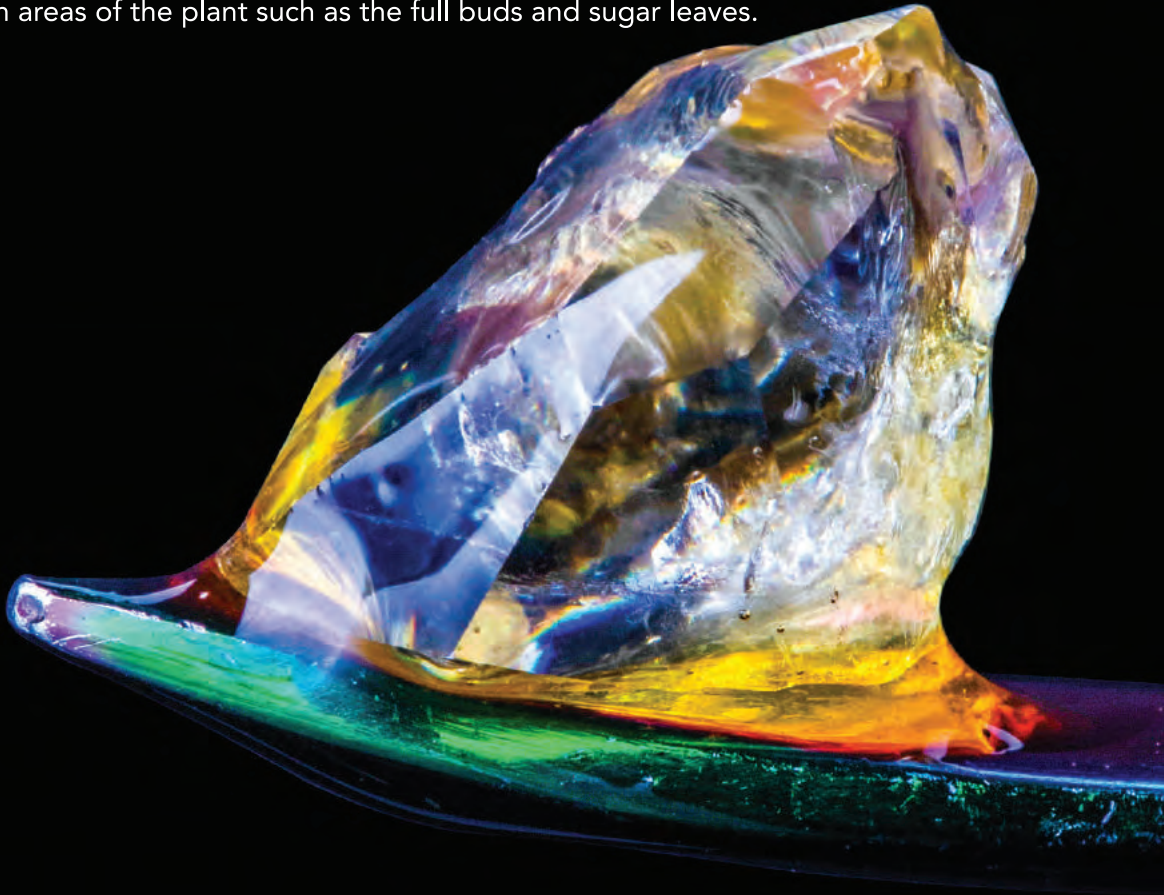
**FULL NUG
FLOWER**



**COLD
EXTRACTION**

What is **Hydrocarbon Extraction**

AKA, Butane Extraction or BHO (Butane Hash Oil) is the process of extracting THC and terpene rich resins from cannabis using highly purified, ultra cold liquid butane. This works by dissolving the terpenes and cannabinoids from the trichomes and oil rich areas of the plant such as the full buds and sugar leaves.



The Process Closed Loop Extraction



01

We grow uniquely greasy strains for our Live Resin and harvest the whole buds, sugar leaves, and other oil rich parts of the plant for extraction - no trim, fan leaves, or stems.



Bizzybee Hexapod
Hydrocarbon Extraction System

02

Once the live flower is thoroughly frozen, it is broken down further and packed into large cylindrical mesh bags before the extraction process begins.



03

Freezing cold butane liquid is washed over the cannabis packed mesh bags inside of the column and left to soak. Soaking times vary depending on the desired end product.

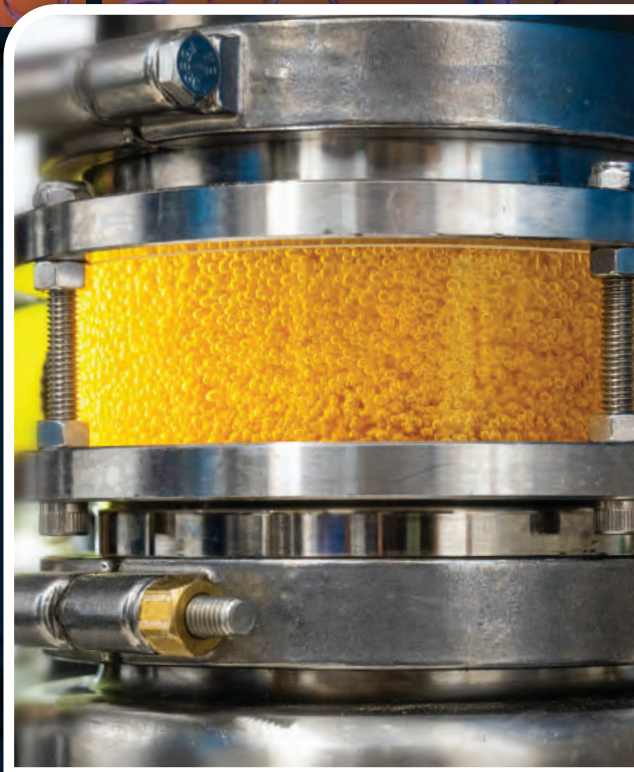


04

The available plant oils are dissolved from the material to create a raw solution of cannabinoids and terpenes.

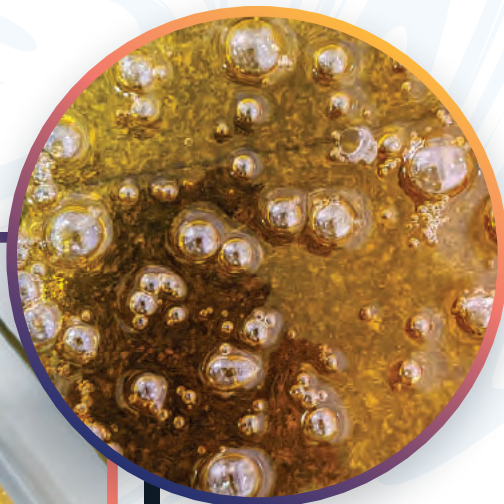
05

The raw solution of liquid butane, cannabinoids and terpenes enters the collection tank where the butane is restored to its original gas form and is evaporated out.



06

The raw oil is collected and released into either jars or trays depending on the end consistency we are aiming to achieve. The oil will continue to purge solvent residuals until they are evaporated out.



07

The gaseous butane is sent back to the original jacketed tank where it is rapidly cooled and condensed back into a liquid to be used for the next run.

The processes of turning a liquid to a gas and back to a liquid is a form of purification commonly known as distillation.



Crashing into our saucy consistencies.

Creating Terp Sugar, and Diamonds & Sauce.

01

The creation of our Terp Sugar and Diamonds & Sauce starts when we collect the raw oil from our extraction into stainless steel vessels. The vessels are kept at a stable temperature while any remaining butane is naturally evaporated away, further concentrating the THCa within the solution. This induces a "crash" - the action of THCa molecules chemically binding together rapidly to form crystalline structures and separating from the terpenes.

This renders a layer of crystal-like structures, lining the bottom of the jar with a thick golden honey like layer of terpenes and secondary cannabinoids laying on top.



02

The crashing process can take anywhere from a day to 8+ weeks. It varies from strain to strain due to terpene profiles, cannabinoid content, and how large of crystals we are trying to achieve. Once we reach optimal crystal formation, the terpenes and the crystals are separated and purged of any residual solvents before we process further.

03

While Terp Sugar and Diamonds & Sauce share the same initial process of THCa and terpene separation, each consistency reunites them through different methods outlined on the next few pages.



Diamonds & Sauce

Caution: You might get lost in this sauce.

This consistency is a mixture of large, chunky THCa Diamonds and High Terpene Extract. The large THCa crystals are achieved by utilizing a slower evaporation process.

The usually bright white THCa crystals adopt the yellow tint of the sauce resulting in a vivid yellow gold coloring with light orange undertones. The saucy end result allows the dabber to control the ratio of "high" to flavor by scooping up the desired amount of terp sauce (flavor) and breaking apart the crystals to the desired size (high).



Terp Sugar

A spoon full of sugar helps the terps go down.

Instead of a slow and methodical crash that is used to grow our large diamonds we induce a rapid crash which creates smaller less defined crystal structures that resemble sugar then mixed back into the high terpene extract.

The end product is a wet and grainy consistency that clumps together easily, varying in hues of deep yellow gold with orange undertones.

This blended consistency boosts flavor and is high in both THCa and terpenes.





**How our
badder is
whipped
into
creation.**

Badder Prepare to be baked.

Just like our Terp Sugar and Diamonds & Sauce, Badder starts at the collection point at the end of our extraction machine. We pour the raw oil into shallow glass baking dishes and stir it slowly to purge any residual solvents and further emulsify the terpenes and cannabinoids. Within a few hours of intermittent stirring, the golden, honey-like oil will turn into a frosted opaque pale pudding. The badder is deemed ready once it develops an oily sheen - a layer of delicious terpenes - achieving what we call the "Terp Wiggle", meaning it jiggles like pudding when moved.

While the overall color and texture will vary depending on the terpene and cannabinoid content, Live Resin Badder typically ranges from rich yellow to a mellow gold, with a whipped cake batter texture.

KEEP THESE PRODUCTS UPRIGHT AT ALL TIMES!

If left on their side or upside down, the product may flow to sides and lid making it hard to scrape from the jar.

IDEAL DAB TEMP:

400° F - 550° F

Try a cold start to taste the full terpene profile.

STORAGE:

*Consuming within 30 days?
Keep at room temperature.*

30+ Days? Store in the fridge.

After storing at cold temperatures, let these products rest before dabbing. These products can sizzle when dabbed due to condensation.

PRO TIPS:

Sauces & Terp Sugar: If left to sit for an extended amount of time at fluctuating temperatures, the THCa diamonds may start to dissolve back into the terp sauce as it reabsorbs the cannabinoids.

Badder: If this product loses its terp shine, dries up, or the terps puddle on top - use a small tool (dabbers are great!) to mix or "whip" into a smooth texture with a heavy fragrance.

CARTRIDGE BREAKDOWN

The following information applies to both our Solventless Live Hash Rosin and Full Spectrum Live Resin Cartridges.

Rosin & Resin Color

Color can range from a light yellow gold to shades of deep amber, depending on strain, terpenes, and cannabinoid content. The various hues of yellow and orange are due to the naturally occurring color pigments (carotene) found in all leafy green plants.

Bubble Size May Vary

Notice the bubble?
The bubbles play an important part in how the cartridge functions. The coils inside of the cartridge will absorb the oil in a process known as capillary action, which is the movement of liquid within a void. This action helps carry oil through the wick to the heating element for a smooth and even vaporization.

The GS Branded Battery

Our branded batteries give you the best experience, and are 3.7 volts. You may try your own batter and go as low as 2.2 volts, however, we recommend not going above 3.7 volts with our cartridges.



Live Hash Rosin Cartridge

All Natural • Solventless • Full Spectrum

Our Live Hash Rosin Cart is an extension of our solventless extract line. It is a pure, all-natural extract of our craft cannabis flowers, with all of the same benefits of Live Hash Rosin, now in the convenience of a cartridge.



ICE



WATER



HEAT



PRESSURE

Live Resin Cartridge

Top Shelf • Full Spectrum • Full Nug Flower

Say goodbye to distillate.

Our Live Resin Cartridge is an extension of our hydrocarbon extract line.

This cartridge is filled with our premium Live Resin extract that preserves the plant's natural cannabinoids, terpenes and flavor profile.

This means no distillate, no outside terpenes, and no cutting or thickening agents are added.



**FULL NUG
FLOWER**



**COLD
EXTRACTION**



The Process:

Our Live Resin carts follow the same initial steps as our Resin Extracts outlined on page 29.

1 Raw Oil Collection

We collect the raw live resin oil from the hydrocarbon system in jars that will sit under low pressure at a stable temperature to purge any butane residuals. During this process the opaque golden-yellow honey like raw oil will separate cleanly into two parts:

2 THCa Crystals (aka THCa Diamonds)

THCA and other cannabinoids will naturally crystallize and form tiny THCa crystal structures on the bottom of the jar.

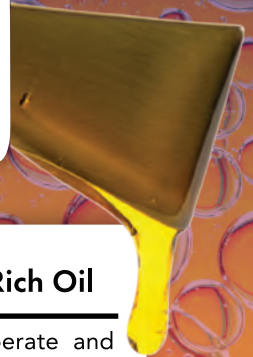
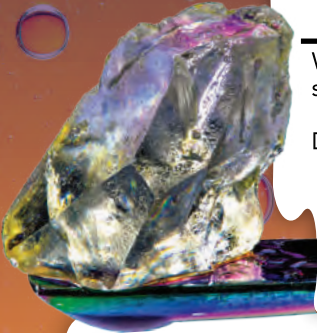
3 Terpene Rich Oil

Terpenes will separate and appear as a translucent but tinted oily layer on top of and surrounding the crystalized cannabinoids.

4 Reuniting & Filling

The non psychoactive THCA is then activated via decarboxylation rendering a very viscous (thick) and mostly flavorless THC-rich oil.

This cannabinoid-rich oil is reunited back with the original terpene-rich oil that it was separated from and loaded into our carts.



HASH ROSIN EDIBLES

Edibles are food first, which means the ingredients and taste need to be great before being infused. Available in a variety of flavors in both gummies and chocolates, our chef has meticulously crafted each recipe. Thoughtfully blending high quality ingredients with our broad spectrum Solventless Live Hash Rosin.

The results are delicious.



Solventless • Broad Spectrum

Many edibles in the marketplace are sprayed or infused with Delta 9 THC distillate, utilizing solvent extraction methods. This means no other terpenes or cannabinoids were preserved during the chemical extraction process.

Our Rosin Edibles uses ice water hash made from real buds, preserving and infusing the plant's broad spectrum of therapeutic and psychoactive compounds (cannabinoids & terpenes) into every mouth watering piece.

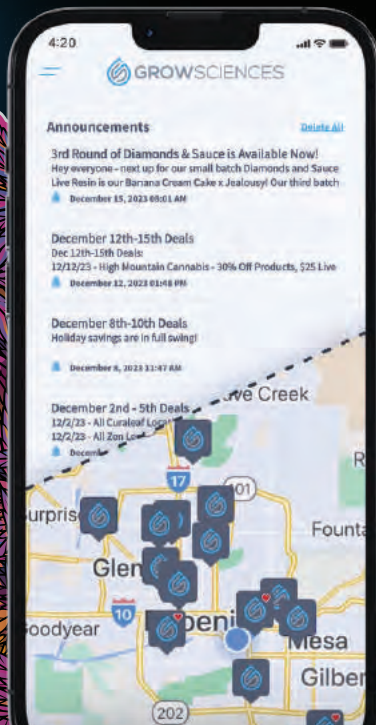
CHOCOLATE BARS



DON'T STAY IN THE DARK!

GrowSciences: Find Our Weed

Scan the QR Code and Download the app to shine a light on coupons, deals, product drops, live chat and more!



Created for consumers seeking products with integrity, quality and cleanliness.

@GROWSCIENCES | GROWSCIENCES.COM